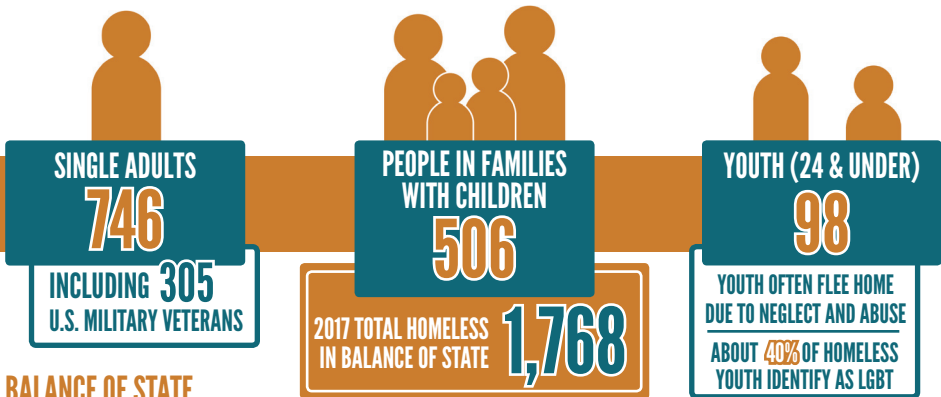


# WHO IS HOMELESS IN ARIZONA'S BALANCE OF STATE?



## BALANCE OF STATE

The Balance of State Continuum of Care (BOSCO) is made up of Arizona's 13 non-metro counties: APACHE, COCHISE, COCONINO, GILA, GRAHAM, GREENLEE, LA PAZ, MOHAVE, NAVAJO, PINAL, SANTA CRUZ, YAVAPAI, and YUMA. Arizona's BOSCO is a community planning process, overseen by staff of the Arizona Department of Housing (ADH), to organize and deliver housing and services to meet the specific needs of people experiencing homelessness as they move to stable housing and maximum self-sufficiency.

The Continuum of Care process was established by the U.S. Department of Housing and Urban Development (HUD) to enable localities to apply to the federal government for McKinney-Vento Homeless Assistance Act competitive grant programs. This process brings together local governments, community businesses, faith-based organizations, non-profits, current and/or formerly homeless persons to develop local solutions to end homelessness.

For more information about Arizona's Balance of State, please visit the ADH website at: [HOUSING.AZ.GOV](http://HOUSING.AZ.GOV)

## HOW DO WE KNOW THESE NUMBERS?

Each January, communities across the country utilize homeless service workers and thousands of volunteers to count the individuals experiencing homelessness, both in shelters and on the streets, in what is called a Point-In-Time (PIT) Count. This data is used at the local level to help inform and fund a variety of housing programs and supportive services to aid in each person or family's housing stability.

## VOLUNTEER OPPORTUNITY

YOU can volunteer for the next PIT Count!  
Watch for more info as 2018 nears.

**MORE INFO: [HOUSING.AZ.GOV](http://HOUSING.AZ.GOV)**



# WHAT ARE THESE INDIVIDUALS EXPERIENCING?

- ➔ Over 32% of those experiencing homelessness in 2016 in the Balance of State attributed their homelessness to **DOMESTIC VIOLENCE**, requiring individuals to engage and interact with multiple services and systems of care to attain and maintain safe, affordable housing.
- ➔ While a majority (42%) of those experiencing homelessness in Arizona's Balance of State report episodes of homelessness of less than 24 months, just over 23% reported in 2016 to having been **WITHOUT A HOME FOR MORE THAN FIVE YEARS**.
- ➔ Nearly 42% of those experiencing homelessness in Arizona's Balance of State are also dealing with a **SERIOUS MENTAL ILLNESS** or **SUBSTANCE USE DISORDER**, necessitating complex case management and supportive services in order to attain and maintain stable housing.

# WHERE CAN I REFER THOSE EXPERIENCING HOMELESSNESS IN ARIZONA

## APACHE COUNTY

**OLD CONCHO COMMUNITY ASSISTANCE CENTER** • 35432 Hwy 180A, Concho, AZ, 85924 • (928) 337-5047

As funds are available, offers motel vouchers, rent, utilities and utility deposits for homelessness prevention, and food referral services.

**ROUND VALLEY COMMUNITY CENTER** • 356 S. Papago, Springerville, AZ 85938 • (928) 333-2516

As funds are available, offers motel vouchers, rent, utilities and utility deposits for homelessness prevention, and food referral services.

## COCHISE COUNTY

**GOOD NEIGHBOR ALLIANCE** • 420 N. 7th Street Sierra Vista, AZ 85635 • (520) 439-0776

Temporary shelter for men, women and children; showers and meals are also offered.

**BISBEE COALITION FOR THE HOMELESS** • Bisbee, AZ • CALL (928) 432-7839 (shelter)

Provides emergency shelter, food, clothing, and case management services for men, women, and families

**HOUSE OF HOPE** • Douglas, AZ • CALL (928) 364-2465

10 emergency shelter beds for victims of domestic violence

**CATHOLIC CHARITIES COMMUNITY SERVICES - FORGACH HOUSE** • Sierra Vista, AZ • CALL (928) 458-9096

40 emergency shelter beds and 5 transitional beds for victims of domestic violence; food; service referrals

**SOUTHEAST ARIZONA HUMAN RESOURCES COUNCIL** • 300 W. Stewart, Willcox, AZ 85643 • (520) 384-3120

As funds are available, offers motel vouchers; move-in assistance; first month's rent; utility deposits.

## GILA COUNTY

**GILA COUNTY COMMUNITY SERVICES** • 5515 S. Apache Avenue Globe, AZ 85501 • (928) 425-7631

Community Action Program, Section 8, and employment services in Globe/Miami & Hayden/Winkelman areas

**COMMUNITY ACTION PROGRAM** • 107 W. Frontier, Suite C Payson, AZ 85541 • (928) 474-1759

Utility payment/deposit assistance, eviction prevention rent assistance, mortgage assistance, utility discount programs with APS, SW Gas and Lifeline in Payson area

## GRAHAM & GREENLEE COUNTIES

**MT. GRAHAM SAFE HOUSE** • Safford, AZ • CALL (520) 348-910, 1-888-269-9104 (toll free for Greenlee County)

For victims of domestic violence. Five days crisis stay plus may extend to leave violent environment.

**SOUTHEASTERN AZ COMMUNITY ACTION PROGRAM** • 283 W. 5th Street, Safford, AZ 85546 • (928) 428-2872

Motel vouchers; food vouchers; move-in assistance; first month's rent; utility deposits.

## MOHAVE COUNTY

**SAFEHOUSE** • Bullhead City, AZ • CALL (520) 763-SAFE (crisis line) • (520) 763-1945 (administration)

20 emergency beds for victims of domestic violence; counseling; shelter for homeless women and children.

**KINGMAN AID TO ABUSED PEOPLE (K.A.A.P.)** • Kingman, AZ • CALL (520) 753-6222

20 emergency beds for domestic violence victims; counseling; homeless beds when available; clothing; advocates in court; some monetary assistance to shelter clients

**WESTERN AZ COUNCIL OF GOVERNMENTS (WACOG)** • 208 N. 4th Street Kingman, AZ 86401 • (520) 753-6247

Provides funding for people looking for shelter; Head Start; energy assistance; weatherization; planning and grantsmanship; area agency on aging; senior programs.

# YUMA COUNTY'S BALANCE OF STATE CONTINUUM OF CARE?

## NAVAJO COUNTY

**HOLBROOK SENIOR CENTER** • 216 NE Central Avenue, Holbrook, AZ 86025 • (928) 524-6044

As funds are available, motel vouchers, rent, utilities, and deposits for homelessness prevention; food; referral services

**NAVAJO COUNTY EMERGENCY SERVICES** • Navajo Cty Government Center - Holbrook, AZ 86025 • (928) 524-4251

Referral center for the homeless for food and shelter

**WHITE MOUNTAIN CATHOLIC CHARITIES** • 2458 Running Bear Rd, Lakeside, AZ 85929 • (928) 367-2244

As funds are available, motel vouchers, rent, utilities, and deposits for homelessness prevention; food; referral services

**WHITE MOUNTAIN ASSOCIATION FOR VICTIMS OF DOMESTIC VIOLENCE** • Pinetop, AZ • CALL (928) 367-6017

20 emergency beds for domestic violence victims; counseling; outpatient services.

## PINAL COUNTY

**COMMUNITY ACTION HUMAN RESOURCES AGENCY** • 109 N. Sunshine Blvd, Eloy, AZ 85131 • (520) 466-1112

Emergency services; utility deposit, utility payment assistance; rent/mortgage payment assistance

**PINAL COUNTY DIVISION OF HOUSING** • 970 N. Eleven Mile Corner Rd, Casa Grande, AZ 85222 • (520) 868-7200

Transitional housing (6-month to 2-year stay)

## YAVAPAI COUNTY

**CATHOLIC SOCIAL SERVICES OF YAVAPAI - COTTONWOOD** • 736 N. Main, Cottonwood, AZ 86326 • (520) 634-4254

Emergency housing (homeless, less than 6-month stay), General Public, Homeless Assistance

**CATHOLIC SOCIAL SERVICES OF YAVAPAI - PRESCOTT** • 434 W. Gurley Street, Prescott, AZ 86301 • (928) 778-2531

Rental assistance/subsidy

**HOME FOR NOW** • 631 Division Street, Prescott, AZ 86301 • (520) 771-8542

Temporary housing

**PROJECT AWARE MEN'S SHELTER** • 215 W. Leroux, Prescott, AZ 86303 • (520) 778-7744

Emergency shelter

**SALVATION ARMY** • 237 S. Montezuma, Prescott, AZ 86303 • (520) 778-0150

Emergency shelter

**VA DOMICILIARY CARE PROGRAM** • 500 N. Highway 89, Prescott, AZ 86313 • (520) 445-4869, ext. 6325

Residential rehabilitation for U.S. military veterans

**WEST YAVAPAI GUIDANCE CLINIC** • 624 Dameron Street, Prescott, AZ 86301 • (520) 445-5211

Transitional housing (6-month to 2-year stay); Rental assistance/subsidy

**PRESCOTT AREA WOMEN'S SHELTER (PAWS)** • 336 N. Rush Street, Prescott, AZ 86301 • (928) 778-5933

Emergency Shelter; Transitional housing

## YUMA COUNTY

**CROSSROADS MISSION** • 944 Arizona Avenue, Yuma, AZ 85364 • (520) 783-9362

Emergency shelter and housing case management (homeless, less than 6-month stay)

**CATHOLIC COMMUNITY SERVICES OF WESTERN ARIZONA** • 690 E. 32nd Street Yuma, AZ 85364 • (928) 341-9400

Emergency housing for homeless women and their homeless children due to domestic violence; Transitional housing (6-month to 2-year stay)

# HOW CAN I BEST ENGAGE WITH THOSE EXPERIENCING HOMELESSNESS?

The only difference between you and the individual experiencing homelessness is that you have a safe place to call home and they currently do not. So why not treat them as you are treated and as you treat others?

- First and foremost, **BE HUMAN AND TREAT OTHERS LIKE HUMANS!** Smile, be courteous, respect boundaries, have a conversation -- it really IS that simple!
- **SAFETY IS TOP PRIORITY!** Never offer rides in your car, and never stand in a poorly lit or deserted area. If you feel unsafe, don't worry about being rude, just leave the situation. **YOUR SAFETY IS TOP PRIORITY ALWAYS!**
- **RESPECTFULLY OFFER WHAT YOU'RE COMFORTABLE GIVING**

"I don't have money, but is there another way I can help you?"

## PANHANDLING ≠ HOMELESSNESS

There is often a perception when someone is panhandling, that means they are homeless, though this is not always the case. Unfortunately, "professional" panhandling by those who have a home often perpetuates many of the negative stereotypes of begging and homelessness. For this reason, substantive engagement and service referrals are highly encouraged (pgs. 2-3), as well as non-monetary ways to assist, such as toiletries, socks & underwear, water bottles, non-perishable snack items, etc. (see below for more tips).



-- the ways in which you can help will vary as each individual's situation and needs are unique.

Many are comfortable with giving money, while many more are not. No matter, there are still ways to help:

- "I don't have money, but is there another way I can help you?" (*Tips below*)
- Be aware of housing and homeless services in your area and where to refer (*See pgs. 2-3*)
- **BE THE KIND FACE TO BRIGHTEN THEIR DAY**

## WHAT ASSISTANCE CAN I OFFER BEYOND MONEY?

To end homelessness, we as a society must work together to resolve the complex issues which contribute to the root causes of homelessness -- behavioral and mental health; substance use and abuse; cycles of poverty; unaffordable, unsafe housing; criminalizing of activities rather than access to critical services. For maximum impact, we suggest meaningful engagement and service referral (*see pages 2-3*), as well as the following:

### IN-KIND DONATION OPTIONS FOR INDIVIDUALS AND/OR LOCAL SHELTERS

Emergency shelters often rely on in-kind donations to provide basic hygiene products to those experiencing homelessness. Here are some other in-kind donations you can consider for shelters and those on the streets:

**DID YOU KNOW?**  
Socks & underwear are often the most needed items

#### YEAR-ROUND

Socks & underwear  
Toiletries (toothbrush & paste, deodorant, shampoo & conditioner, razors & shave creme/gel)  
Feminine hygiene products  
Non-perishable snack items  
Public transit passes

#### SPRING & SUMMER

WATER, WATER, & MORE WATER  
Reusable water bottles  
Gatorade/Powerade  
Chapstick & moisturizer  
Sun protection (hats, sunglasses, sunscreen, compact umbrella)

#### FALL & WINTER

All-weather coats & jackets  
Waterproof outer gear  
Warming gear (hats, gloves & scarves, hand warmers, etc.)  
Wool socks & thermals  
Blankets & sleeping bags  
Hot food gift cards

## THIS INFORMATION BROUGHT TO YOU BY:

 **AZCEH**  
ARIZONA COALITION TO END HOMELESSNESS

141 E. Palm Lane, #105 • Phoenix, AZ 85004  
(602) 340-9393 • AZCEH.ORG